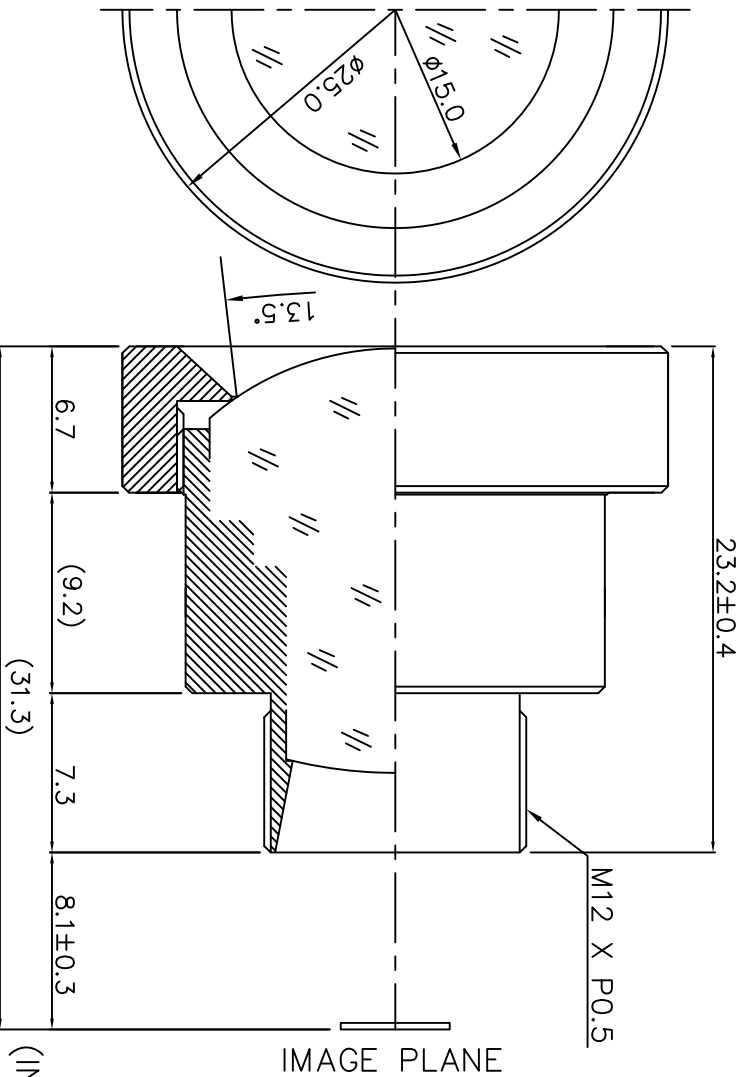


25.0MM (K TYPE)



1. SENSING AREA : 1/3"[MT9M024]
2. FOCAL LENGTH : 25.0MM ± 5%
3. BACK FOCAL LENGTH : 11.8MM ± 5% (IN AIR)
4. MAXIMUM RELATIVE APERTURE : 2.5 ± 5%
5. IRIS : FIXED
6. LENS CONSTRUCTION : 4COMPONENTS 4ELEMENTS
7. ANGULAR FIELD OF VIEW :

DIAGONAL	13.5°
HORIZONTAL	10.7°
VERTICAL	7.8°

(IT IS CHANGEABLE ON EXTERNAL DIMENSION
BY CUSTOMER'S REQUIREMENT.)

At, Finite optical system (WD=360mm)

- BACK FOCAL LENGTH : 13.6MM ± 5%
- MAXIMUM RELATIVE APERTURE : 5.5 ± 5%
- ANGULAR FIELD OF VIEW :

DIAGONAL	12.7°
HORIZONTAL	10.2°
VERTICAL	7.6°

(IN AIR)

E-mail : hki9612@ktnet.co.kr
Website : http://optical.hkopto.com

HK HANKWANG OPTO		TOLERANCES		Designed	BANG HYE SUN	Title	FOR B/W & COLOR f=25.0MM Fno 2.5
		ANGLE 1°/2	Checked	PARK JIN HYUN			
		X. ± 0.2	Approved				
		.X ± 0.1				DATE	2012.05.04
		.XX ± 0.05				REVISION NO.	-00
A4	Scale	N/S		Dwg No.	HK-V2504S(M12)		