

2.0MM (FT TYPE)

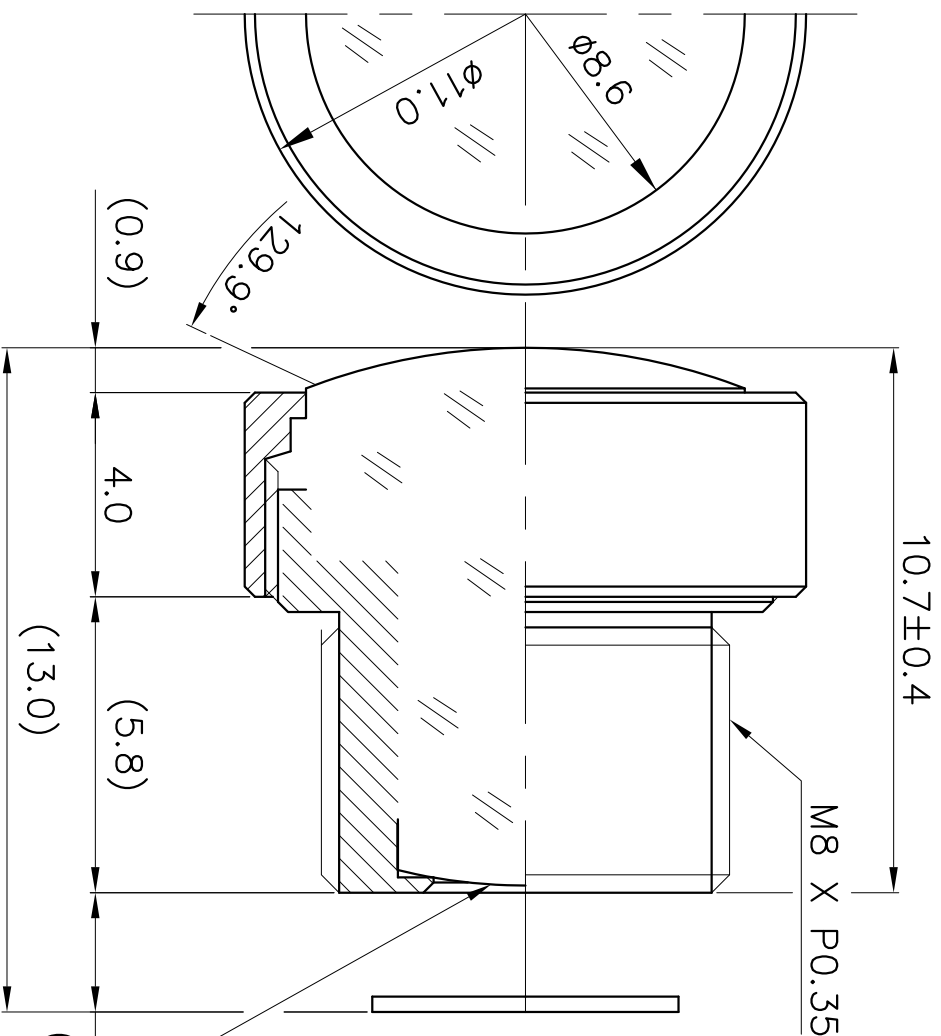


IMAGE PLANE

660nm IR-CUT COATING

2.3 ± 0.3
(IN AIR)

1. SENSING AREA : 1/4" CCD
2. FOCAL LENGTH : 2.0MM ± 5%
3. BACK FOCAL LENGTH : 2.47MM ± 5%
4. MAXIMUM RELATIVE APERTURE : 2.5 ± 5%
5. IRIS : FIXED
6. LENS CONSTRUCTION : 6ELEMENTS (1ASP / 5G)
7. ANGULAR FIELD OF VIEW :
 - DIAGONAL 129.9°
 - HORIZONTAL 100.4°
 - VERTICAL 74.1°
8. COATING : 660nm IR-CUT Coating
9. MINIMUM OBJECT DISTANCE : 40CM -00
(IT IS CHANGEABLE ON EXTERNAL DIMENSION
BY CUSTOMER'S REQUIREMENT.)

E-mail : hki9612@hkopto.com
Website : http://www.hkopto.com

		TOLERANCES		Designed	E Y .KIM	Title	f=2.0MM Fno 2.5 Automotive Lens
		ANGLE 1°/2	Checked	J H .PARK			
A4	Scale	N/S	X. ± 0.2	Approved	HK-A206S (BX-KTG M8)	DATE	2019.01.18
			.X ± 0.1				
			.XX ± 0.05				-00