

4.3MM (K TYPE)

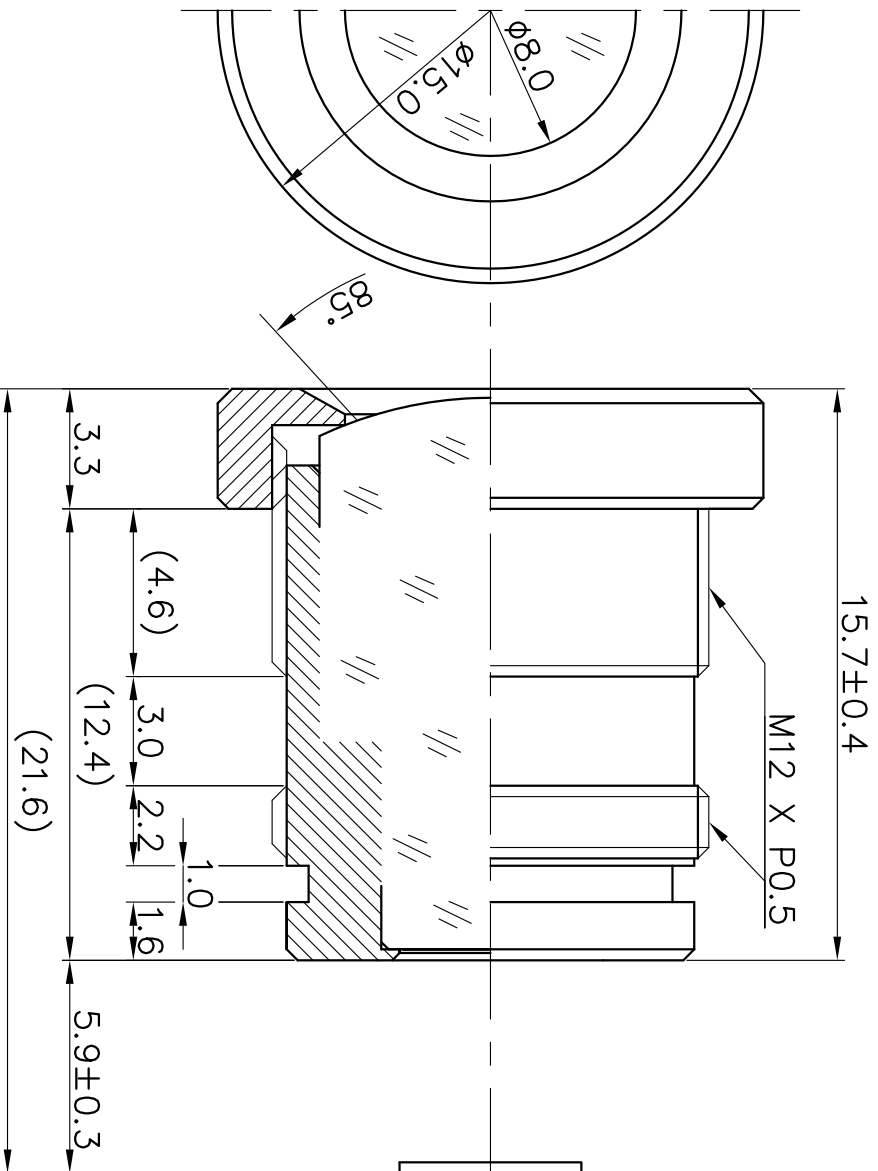


IMAGE PLANE

(IN AIR)

1. SENSING AREA : 1/3" & 1/4"
 2. FOCAL LENGTH : 4.3MM ± 5%
 3. BACK FOCAL LENGTH : 6.1MM ± 5% (IN AIR)
 4. MAXIMUM RELATIVE APERTURE : 2.0 ± 5%
 5. IRIS : FIXED
 6. LENS CONSTRUCTION : 4COMPONENTS 4ELEMENTS
 7. ANGULAR FIELD OF VIEW : 1/3" & 1/4"
 DIAGONAL 85.0° 61.2°
 HORIZONTAL 65.7° 49.0°
 VERTICAL 48.6° 36.7°
 8. MINIMUM OBJECT DISTANCE : 40 CM -00
 9. WEIGHT : 6.0gr
- (IT IS CHANGEABLE ON EXTERNAL DIMENSION BY
 BY CUSTOMER'S REQUIREMENT.)

E-mail : hki9612@hkopto.com
 Website : http://hkopto.com

		TOLERANCES		Designed	E Y .KIM	Title	FOR B/W & COLOR f=4.3MM Fno 2.0 (434200K-1SK)
		ANGLE 1°/2	Checked	J H .PARK			
X.	± 0.2	Approved	Dwg No.	HK-V434S(SK)	DATE	2019.01.07	REVISION NO. -00
.X	± 0.1						
.XX	± 0.05						
A4	Scale	N/S					