

3.6MM (K TYPE)

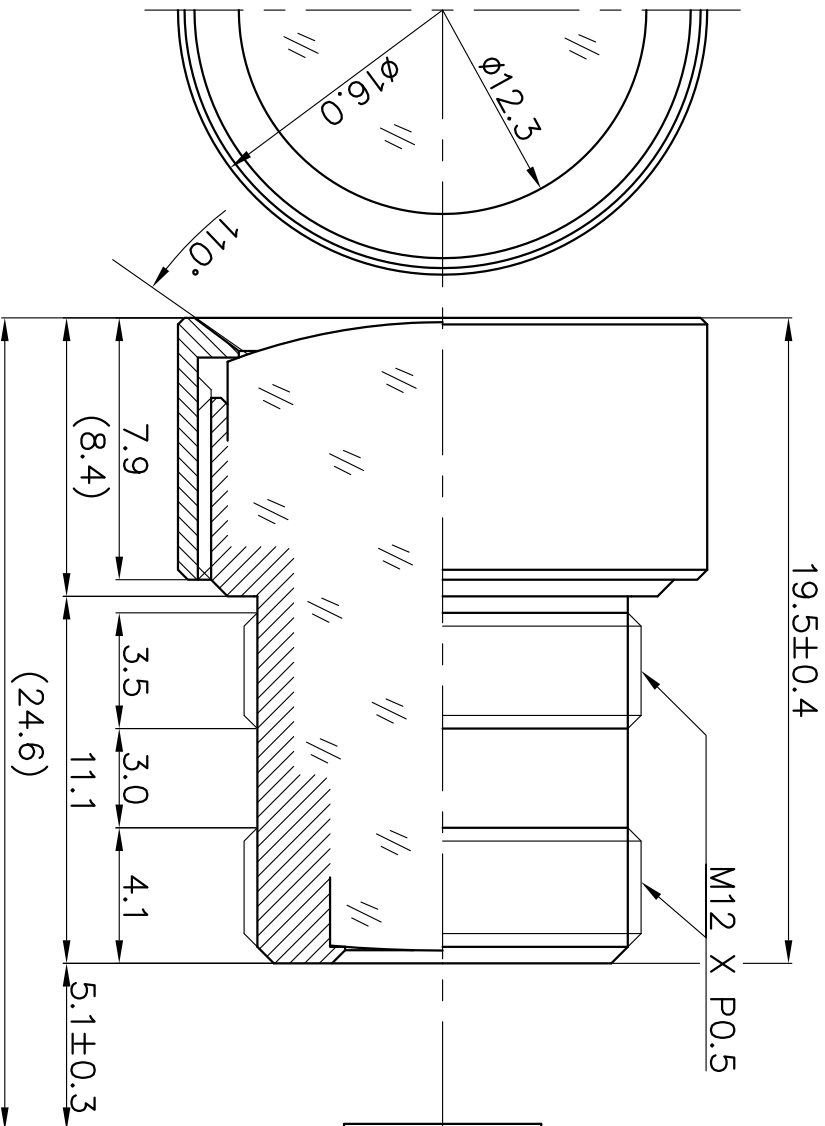


IMAGE PLANE

(IN AIR)

1. SENSING AREA : 1/3" & 1/4"
 2. FOCAL LENGTH : 3.6MM ± 5%
 3. BACK FOCAL LENGTH : 5.25MM ± 5% (IN AIR)
 4. MAXIMUM RELATIVE APERTURE : 1.4 ± 5%
 5. IRIS : FIXED
 6. LENS CONSTRUCTION : 5COMPONENTS SELEMENTS
 7. ANGULAR FIELD OF VIEW : 1/3" & 1/4"
 DIAGONAL 110.0° 78.5°
 HORIZONTAL 83.2° 62.0°
 VERTICAL 61.6° 45.6°
 8. MINIMUM OBJECT DISTANCE : 40 CM -00
 9. WEIGHT : 5.0gr
- (IT IS CHANGEABLE ON EXTERNAL DIMENSION BY
 BY CUSTOMER'S REQUIREMENT.)

E-mail : hki9612@hkopto.com
 Website : http://optical.hkopto.com

		TOLERANCES		Designed	E Y .KIM	Title	FOR B/W & COLOR f=3.6MM Fno 1.4
		ANGLE 1°/2	Checked	J H .PARK			
X.	± 0.2	Approved	Dwg No.	HK-V3655	DATE	2019.01.07	REVISION NO. -00
.X	± 0.1						
.XX	± 0.05						
A4	Scale	N/S					