

# 1.5MM ( FT TYPE )

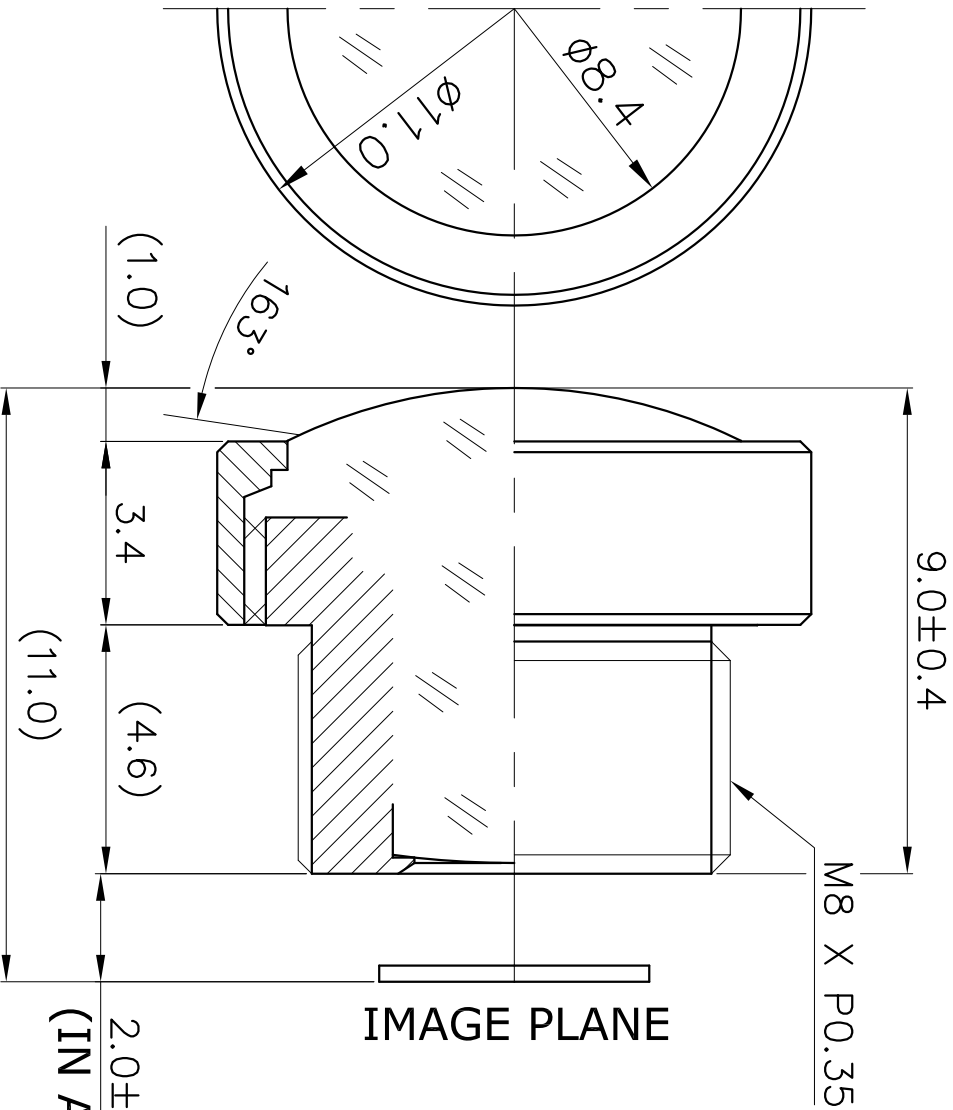


IMAGE PLANE

1. SENSING AREA : 1/4" CCD & OV2650/55
2. FOCAL LENGTH : 1.5MM  $\pm$  5%
3. BACK FOCAL LENGTH : 2.2MM  $\pm$  5% (WITHOUT FILTER)
4. MAXIMUM RELATIVE APERTURE :  $1.9 \pm 5\%$
5. IRIS : FIXED
6. LENS CONSTRUCTION : 6ELEMENTS (1ASP / 5G)
7. ANGULAR FIELD OF VIEW : 1/4"CCD & OV2650/55  
 DIAGONAL 163.0° 126.3°  
 HORIZONTAL 130.0° 100.9°  
 VERTICAL 100.9° 75.7°
8. COATING : SLAR COATING (550NM±10NM , R < 3.0%)  
 ( IT IS CHANGEABLE ON EXTERNAL DIMENSION  
 BY CUSTOMER'S REQUIREMENT.)

E-mail : hki9612@hkopto.com  
 Website : http://www.hkopto.com

		TOLERANCES		Designed	E Y .KIM	Title	f=1.5MM Fno 1.9 1/4"CCD Automotive Lens
		ANGLE 1°/2	Checked	J H .PARK			
X.	$\pm 0.2$	Approved					
.X	$\pm 0.1$						
.XX	$\pm 0.05$						
A4	Scale	N/S	Dwg No.	HK-A156S (BX M8)	DATE	2019.01.18	REVISION NO. -00