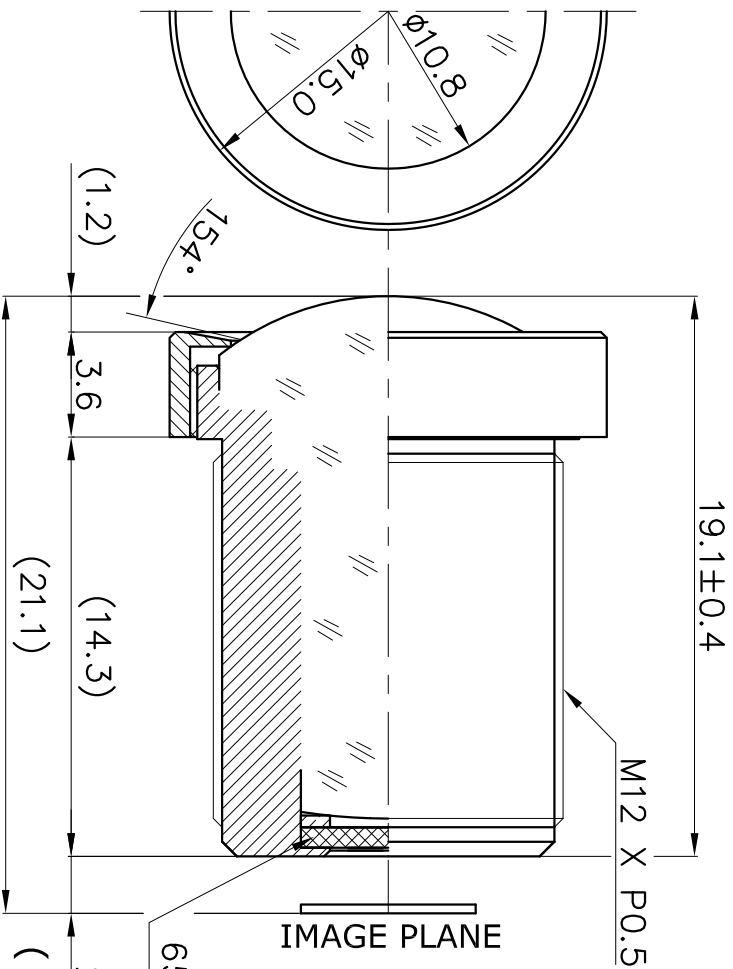


# 1.7MM (FT TYPE)



650nm IR-CUT Filter(t=0.7)  
2.0±0.3  
( IN AIR )

1. SENSING AREA : 1/4" CCD & OV2643(720P)
2. FOCAL LENGTH : 1.7MM ± 5%
3. BACK FOCAL LENGTH : 3.25MM ± 5% (IN AIR)
4. MAXIMUM RELATIVE APERTURE : 2.0 ± 5%
5. IRIS : WITHOUT DIAPHRAGM
6. LENS CONSTRUCTION : 6COMPONENTS 6ELEMENTS  
BUILT-IN (650nm IR-CUT) FILTER
7. ANGULAR FIELD OF VIEW : 1/4" CCD & OV2643(720P)  
DIAGONAL 154.0° 109.7°  
HORIZONTAL 120.0° 101.0°  
VERTICAL 95.0° 53.6°
8. CRA(Chief Ray Angle) : 7.97°  
( IT IS CHANGEABLE ON EXTERNAL DIMENSION  
BY CUSTOMER'S REQUIREMENT.)

E-mail : hki9612@hkopto.com  
Website : http://www.hkopto.com

		TOLERANCES		Designed	BANG HYE SUN	Title	FOR B/W & COLOR f=1.7MM Fno 2.0 ( HIGH RESOLUTION )
		ANGLE 1°/2	Checked	PARK JIN HYUN			
X.	± 0.2	.X	± 0.1	Approved		DATE	2011.01.05
.XX	± 0.05					REVISION NO.	-00
A4	Scale	N/S		Dwg No.	HK-R176S		